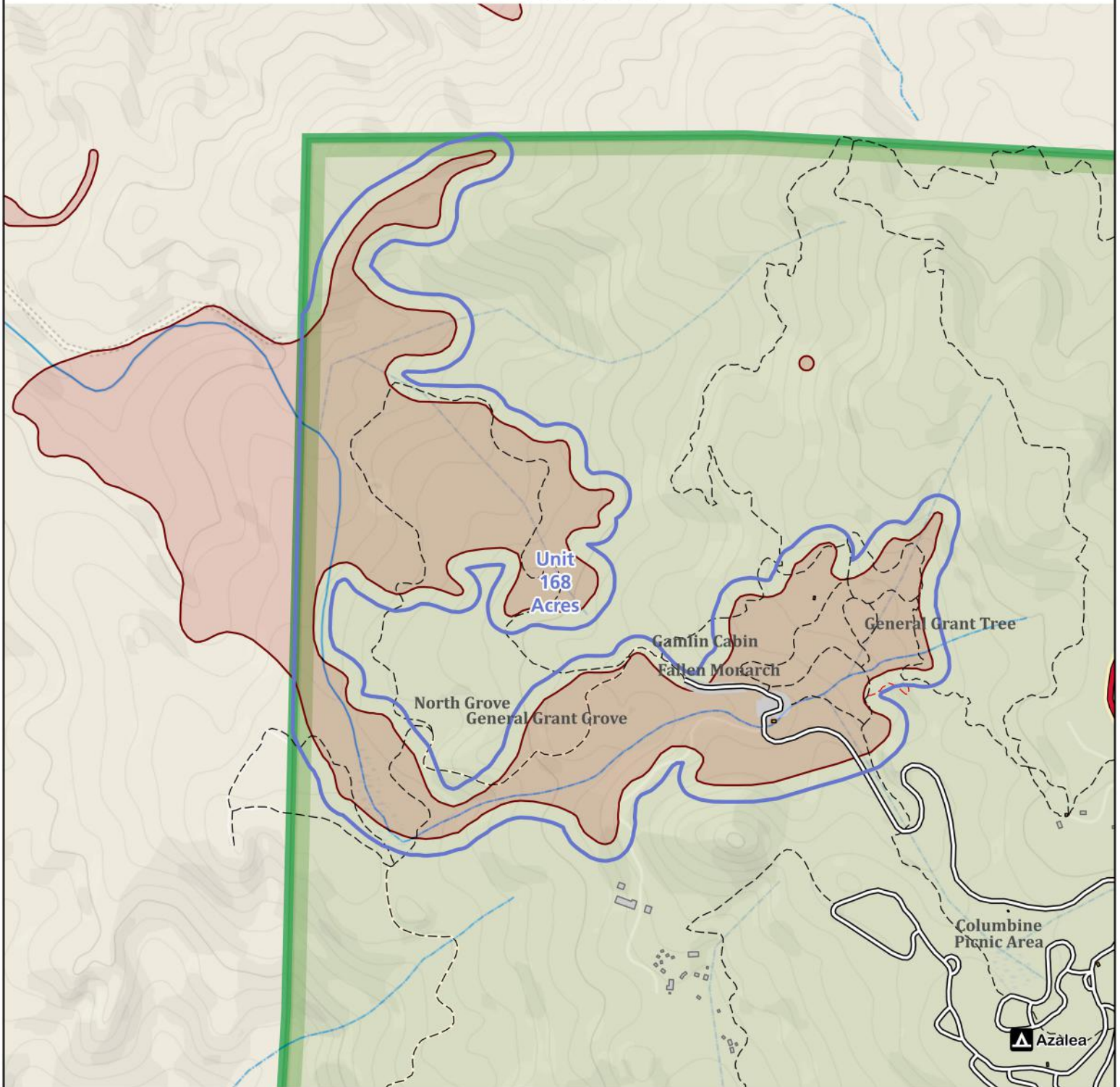


# Sequoia Grove Treatments

Sequoia and Kings Canyon National Parks  
National Park Service  
U.S. Department of the Interior



## Grant Grove



- |                            |                     |
|----------------------------|---------------------|
| Sequoia Groves             | <b>ROADS</b>        |
| Sequoia Treatment Units    | <b>Public Roads</b> |
| Prescribed Fire            | Primary             |
| Restorative Thinning       | Paved               |
| <b>Proposed Fire Lines</b> | <b>TRAILS</b>       |
| Handline                   | Maintained Trails   |
| Trail Improvement          | Unmaintained Trails |

Produced by: NPS, SEKI GIS; 9/13/2022

This map shows giant sequoia groves selected for emergency action treatments and the boundaries for the emergency action treatments. Treatments are divided by type: prescribed fire or restorative thinning.



SCALE 1:10,000 Where 1 inch equals 0.16 miles  
NAD 1983 UTM Zone 11N

MAP FRAME EXTENT

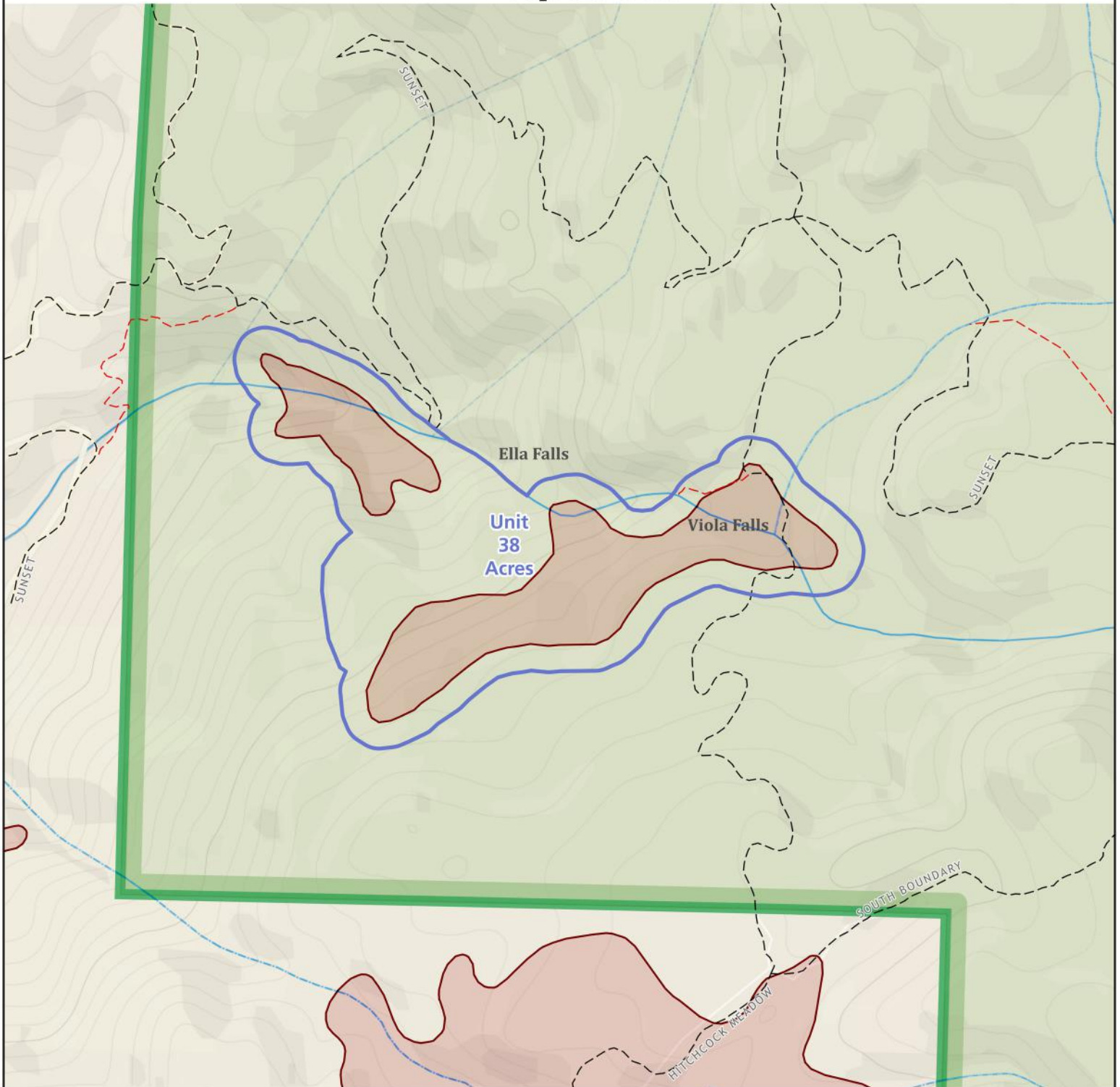


# Sequoia Grove Treatments

Sequoia and Kings Canyon National Parks  
National Park Service  
U.S. Department of the Interior



## Sequoia Creek



- |                            |                               |
|----------------------------|-------------------------------|
| Sequoia Groves             | <b>TRAILS</b>                 |
| Sequoia Treatment Units    | ----- Maintained Trails       |
| Prescribed Fire            | - - - - - Unmaintained Trails |
| Restorative Thinning       |                               |
| <b>Proposed Fire Lines</b> |                               |
| Handline                   |                               |
| Trail Improvement          |                               |

Produced by: NPS, SEKI GIS; 9/13/2022

This map shows giant sequoia groves selected for emergency action treatments and the boundaries for the emergency action treatments. Treatments are divided by type: prescribed fire or restorative thinning.



SCALE 1:6,327 Where 1 inch equals 0.1 miles  
NAD 1983 UTM Zone 11N

MAP FRAME EXTENT

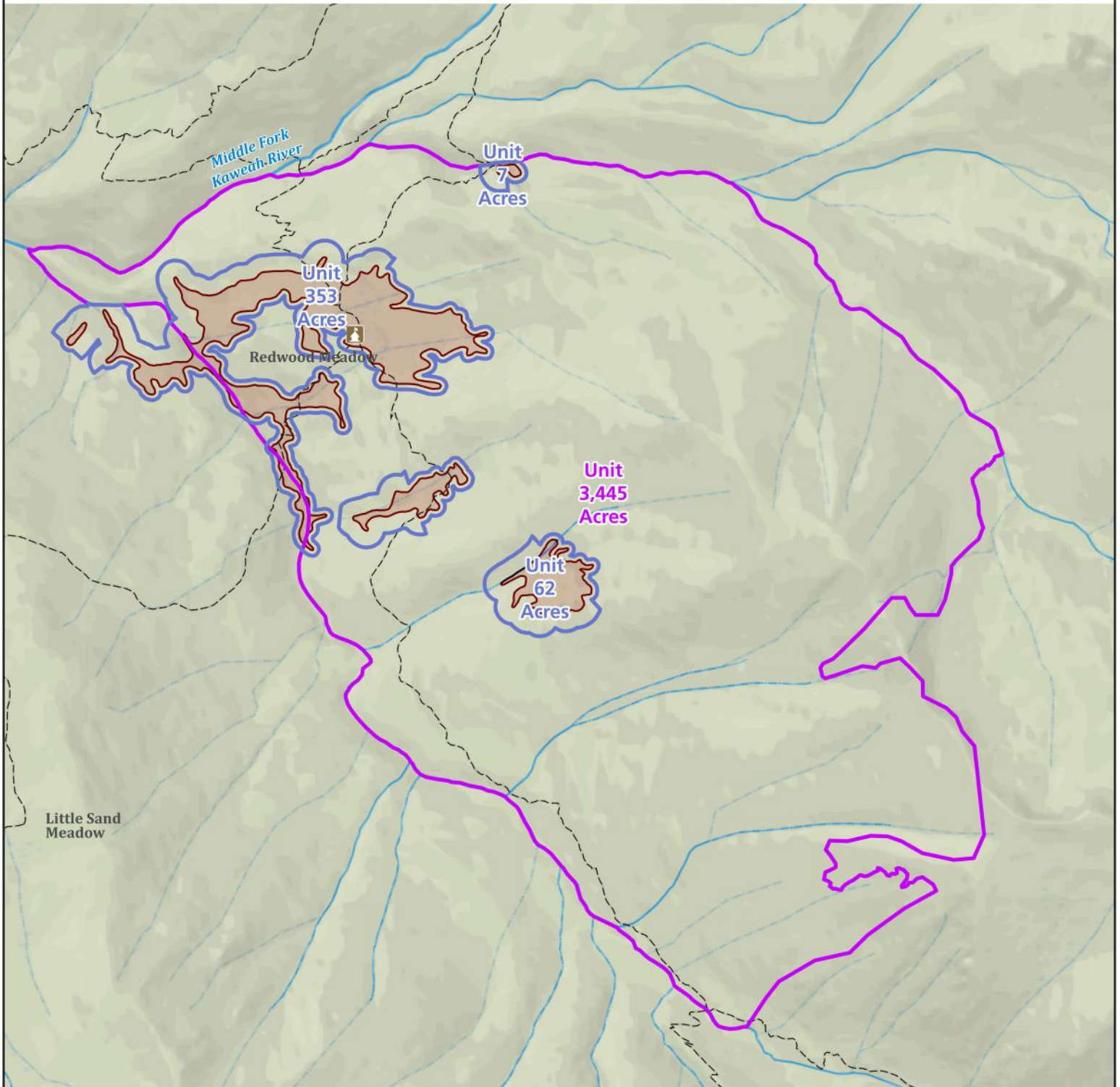


# Sequoia Grove Treatments

Sequoia and Kings Canyon National Parks  
National Park Service  
U.S. Department of the Interior



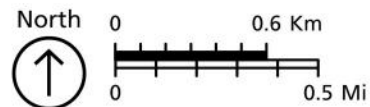
## Redwood Meadow Rx



- Sequoia Groves
  - Sequoia Treatment Units
  - Prescribed Fire
  - Restorative Thinning
  - Proposed Fire Lines
  - Handline
  - Trail Improvement
- TRAILS**
- Maintained Trails

Produced by: NPS, SEKI GIS; 9/13/2022

This map shows giant sequoia groves selected for emergency action treatments and the boundaries for the emergency action treatments. Treatments are divided by type: prescribed fire or restorative thinning.



SCALE 1:30,000 Where 1 inch equals 0.47 miles  
NAD 1983 UTM Zone 11N

MAP FRAME EXTENT

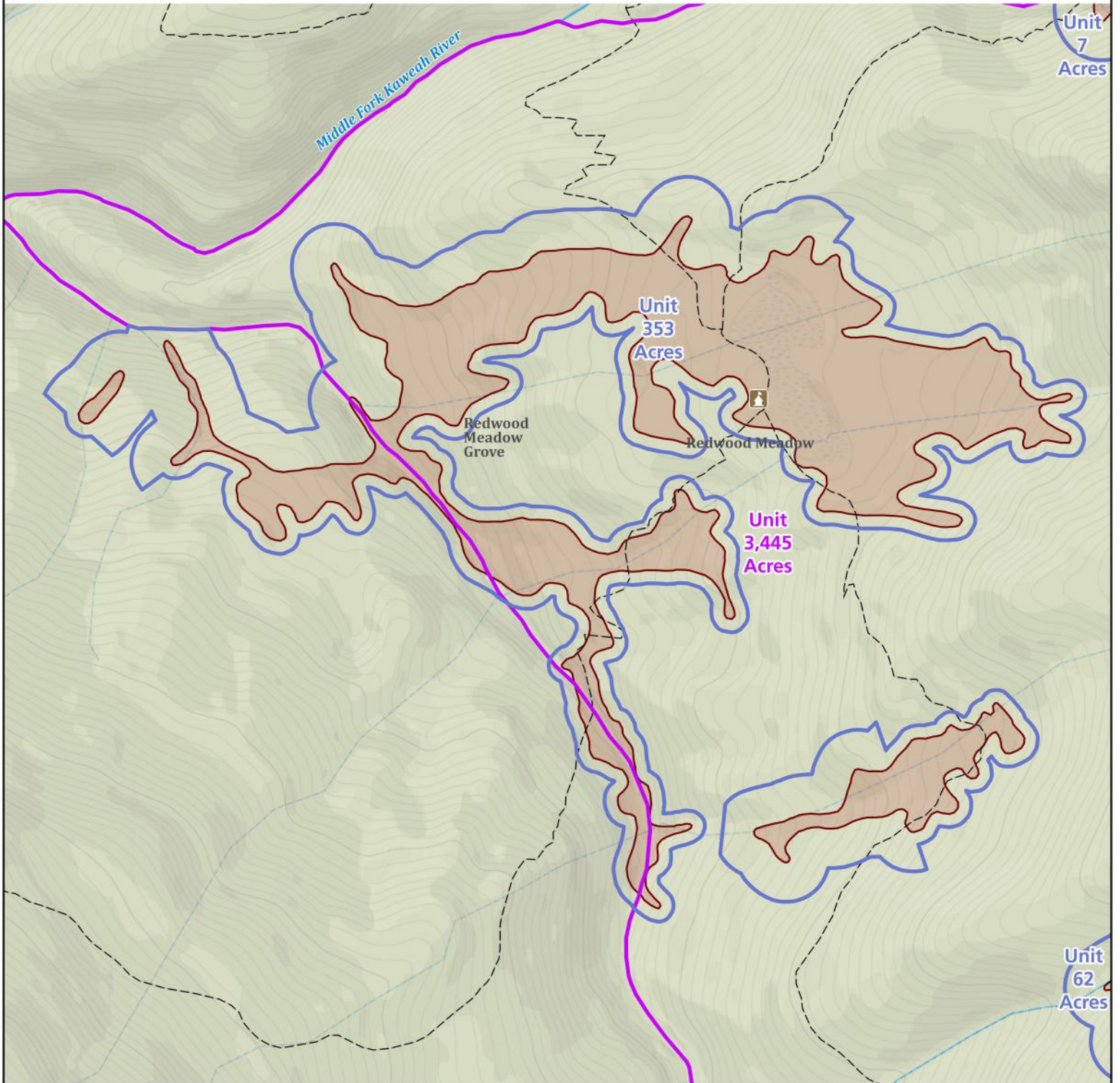


# Sequoia Grove Treatments

Sequoia and Kings Canyon National Parks  
National Park Service  
U.S. Department of the Interior



## Redwood Meadow



- Sequoia Groves
- Sequoia Treatment Units**
- Prescribed Fire
- Restorative Thinning
- Proposed Fire Lines**
- Handline
- Trail Improvement
- TRAILS**
- Maintained Trails

Produced by: NPS, SEKI GIS; 9/13/2022

This map shows giant sequoia groves selected for emergency action treatments and the boundaries for the emergency action treatments. Treatments are divided by type: prescribed fire or restorative thinning.



SCALE 1:12,653 Where 1 inch equals 0.2 miles  
NAD 1983 UTM Zone 11N

MAP FRAME EXTENT

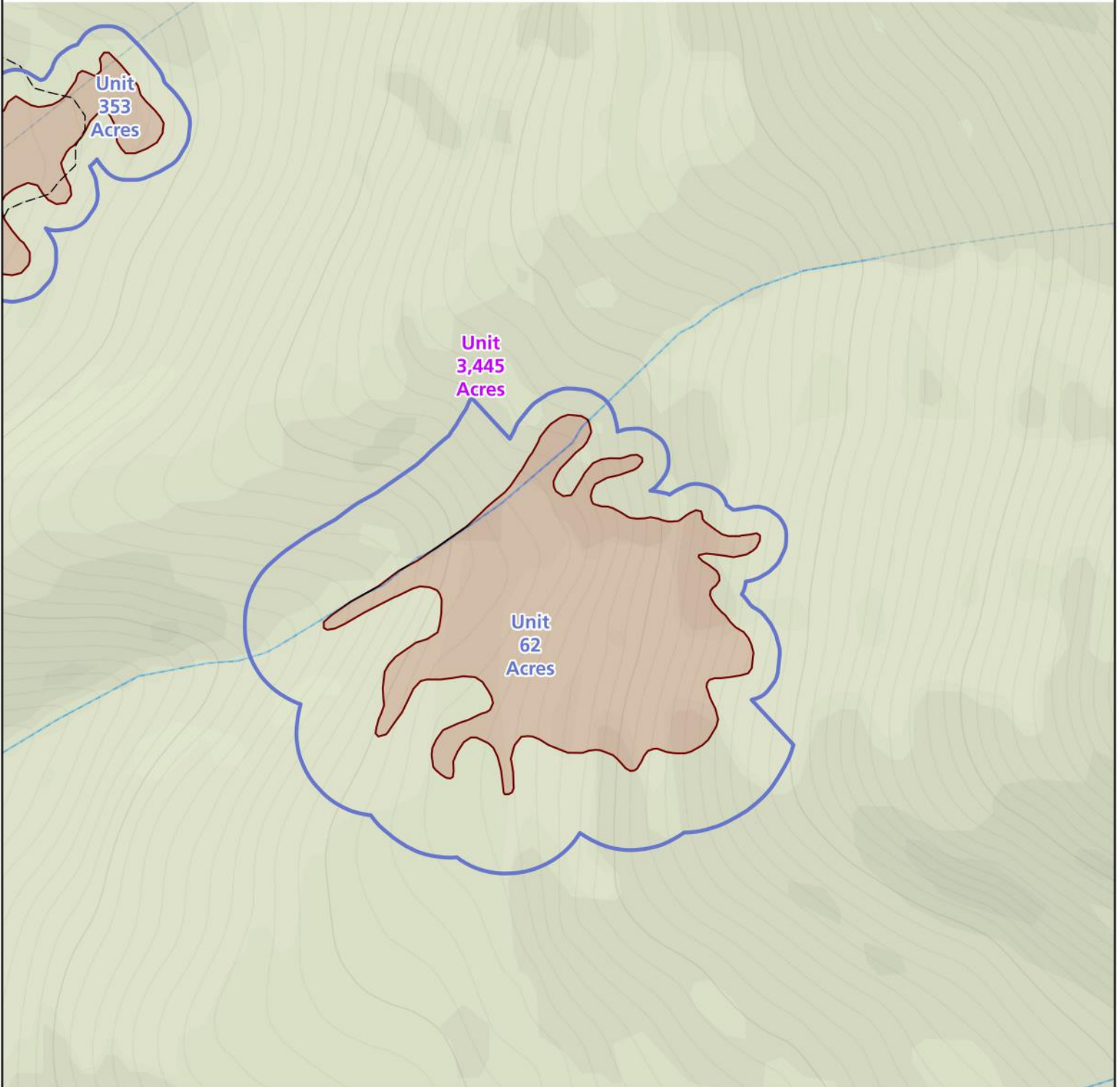


# Sequoia Grove Treatments

Sequoia and Kings Canyon National Parks  
National Park Service  
U.S. Department of the Interior



## Little Redwood Meadow



- Sequoia Groves
- Sequoia Treatment Units**
- Prescribed Fire
- Restorative Thinning
- Proposed Fire Lines**
- Handline
- Trail Improvement
- TRAILS**
- Maintained Trails

Produced by: NPS, SEKI GIS; 9/13/2022

This map shows giant sequoia groves selected for emergency action treatments and the boundaries for the emergency action treatments. Treatments are divided by type: prescribed fire or restorative thinning.



SCALE 1:6,327 Where 1 inch equals 0.1 miles  
NAD 1983 UTM Zone 11N

MAP FRAME EXTENT

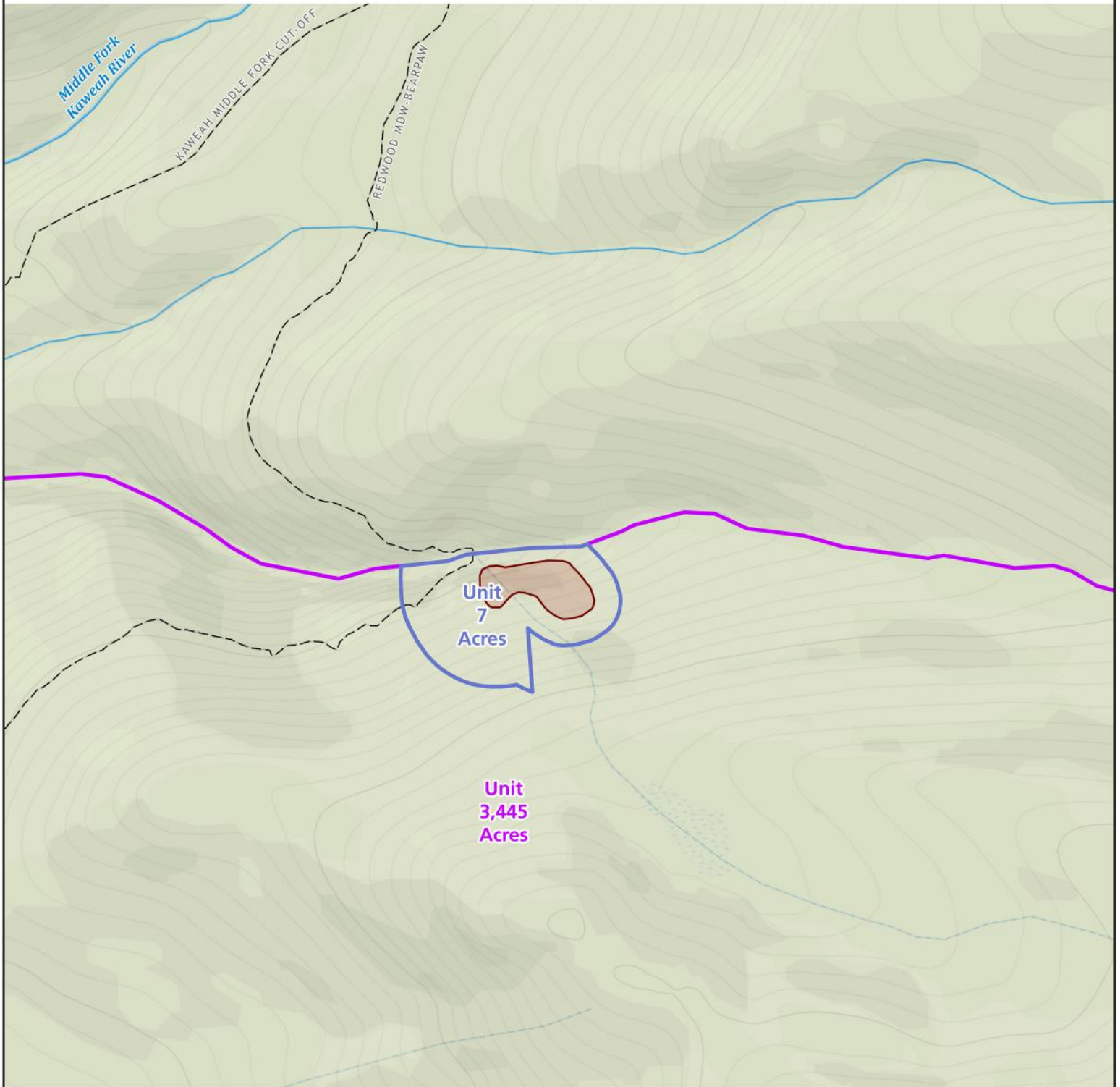


# Sequoia Grove Treatments

Sequoia and Kings Canyon National Parks  
National Park Service  
U.S. Department of the Interior



## Granite Creek



- Sequoia Groves
  - Sequoia Treatment Units
  - Prescribed Fire
  - Restorative Thinning
  - Proposed Fire Lines
  - Handline
  - Trail Improvement
- TRAILS**
- Maintained Trails

Produced by: NPS, SEKI GIS; 9/13/2022

This map shows giant sequoia groves selected for emergency action treatments and the boundaries for the emergency action treatments. Treatments are divided by type: prescribed fire or restorative thinning.



SCALE 1:6,327 Where 1 inch equals 0.1 miles  
NAD 1983 UTM Zone 11N

MAP FRAME EXTENT

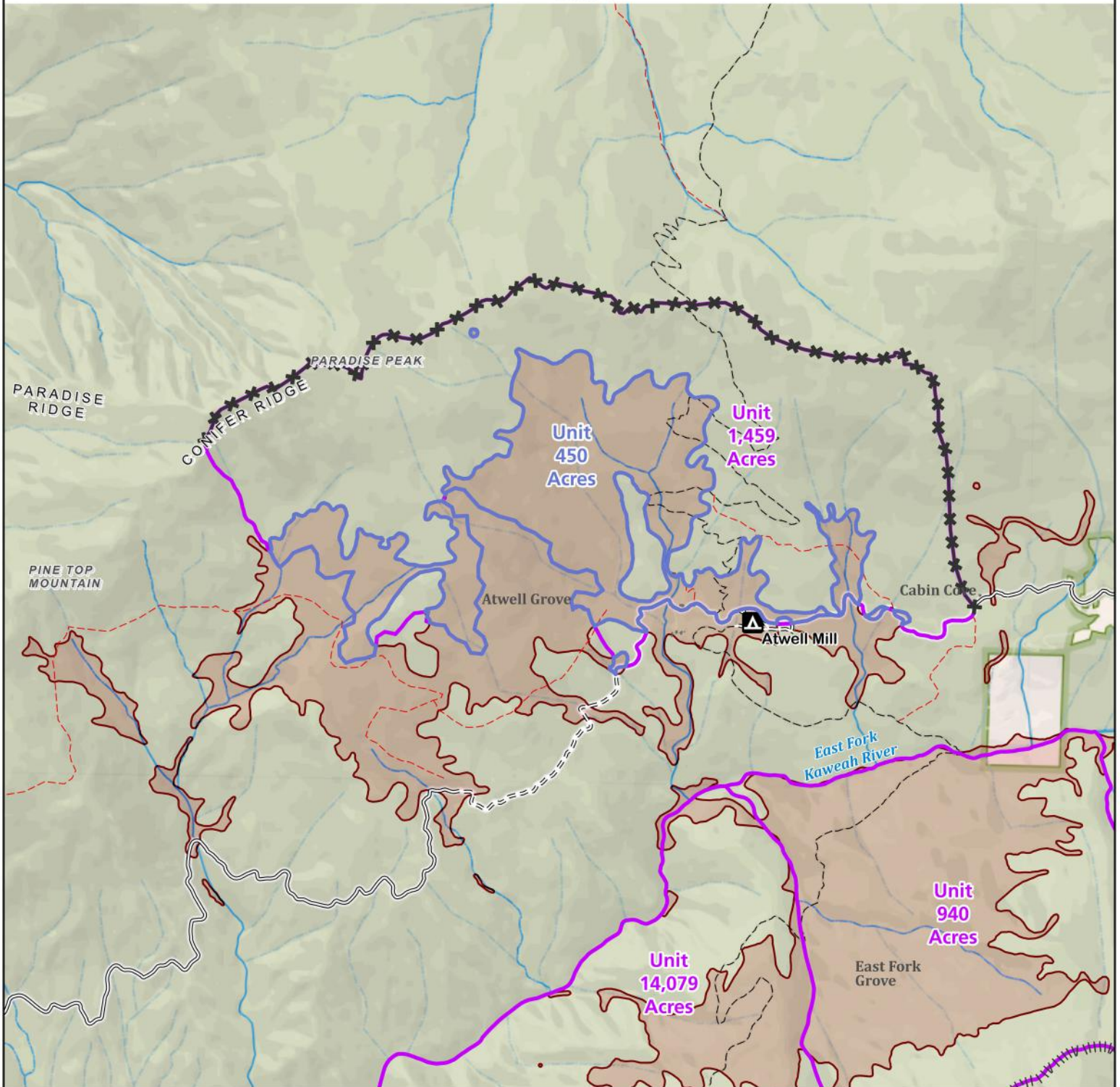


# Sequoia Grove Treatments

Sequoia and Kings Canyon National Parks  
National Park Service  
U.S. Department of the Interior



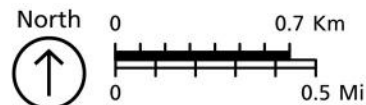
## Atwell



- |                            |                     |
|----------------------------|---------------------|
| Sequoia Groves             | <b>ROADS</b>        |
| Sequoia Treatment Units    | <b>Public Roads</b> |
| Prescribed Fire            | Paved               |
| Restorative Thinning       | Unpaved             |
| <b>Proposed Fire Lines</b> | <b>TRAILS</b>       |
| Handline                   | Maintained Trails   |
| Trail Improvement          | Unmaintained Trails |

Produced by: NPS, SEKI GIS; 9/13/2022

This map shows giant sequoia groves selected for emergency action treatments and the boundaries for the emergency action treatments. Treatments are divided by type: prescribed fire or restorative thinning.



SCALE 1:30,368 Where 1 inch equals 0.48 miles  
NAD 1983 UTM Zone 11N

MAP FRAME EXTENT



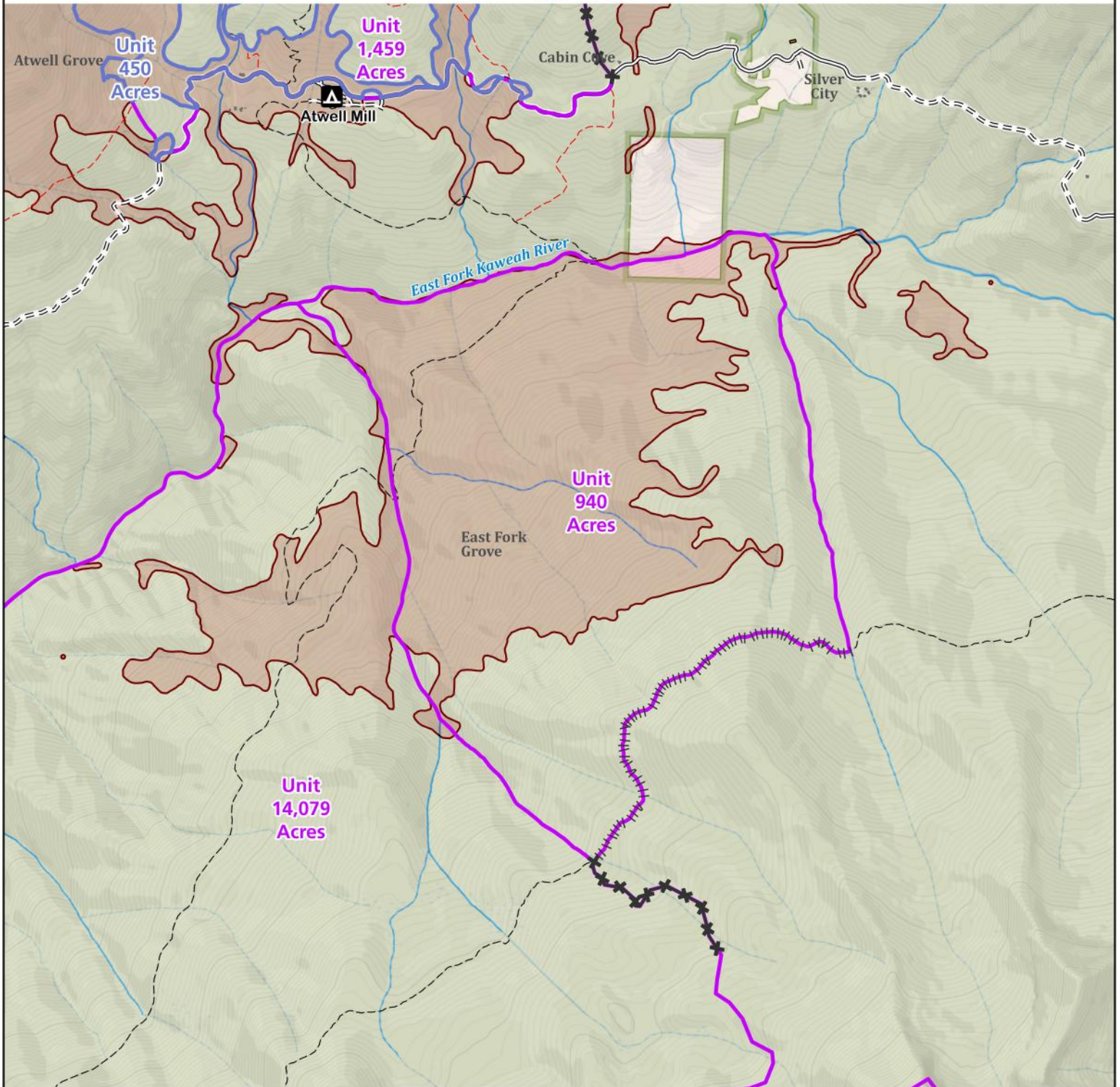


# Sequoia Grove Treatments

Sequoia and Kings Canyon National Parks  
National Park Service  
U.S. Department of the Interior



## East Fork Rx



- |                            |                                 |
|----------------------------|---------------------------------|
| Sequoia Groves             | <b>ROADS</b>                    |
| Sequoia Treatment Units    | <b>Public Roads</b>             |
| Prescribed Fire            | —— Paved                        |
| Restorative Thinning       | - - - Unpaved                   |
| <b>Proposed Fire Lines</b> | <b>TRAILS</b>                   |
| Handline                   | - - - - Maintained Trails       |
| Trail Improvement          | - . - . - . Unmaintained Trails |

Produced by: NPS, SEKI GIS; 9/13/2022

This map shows giant sequoia groves selected for emergency action treatments and the boundaries for the emergency action treatments. Treatments are divided by type: prescribed fire or restorative thinning.



SCALE 1:24,000 Where 1 inch equals 0.38 miles  
NAD 1983 UTM Zone 11N

MAP FRAME EXTENT

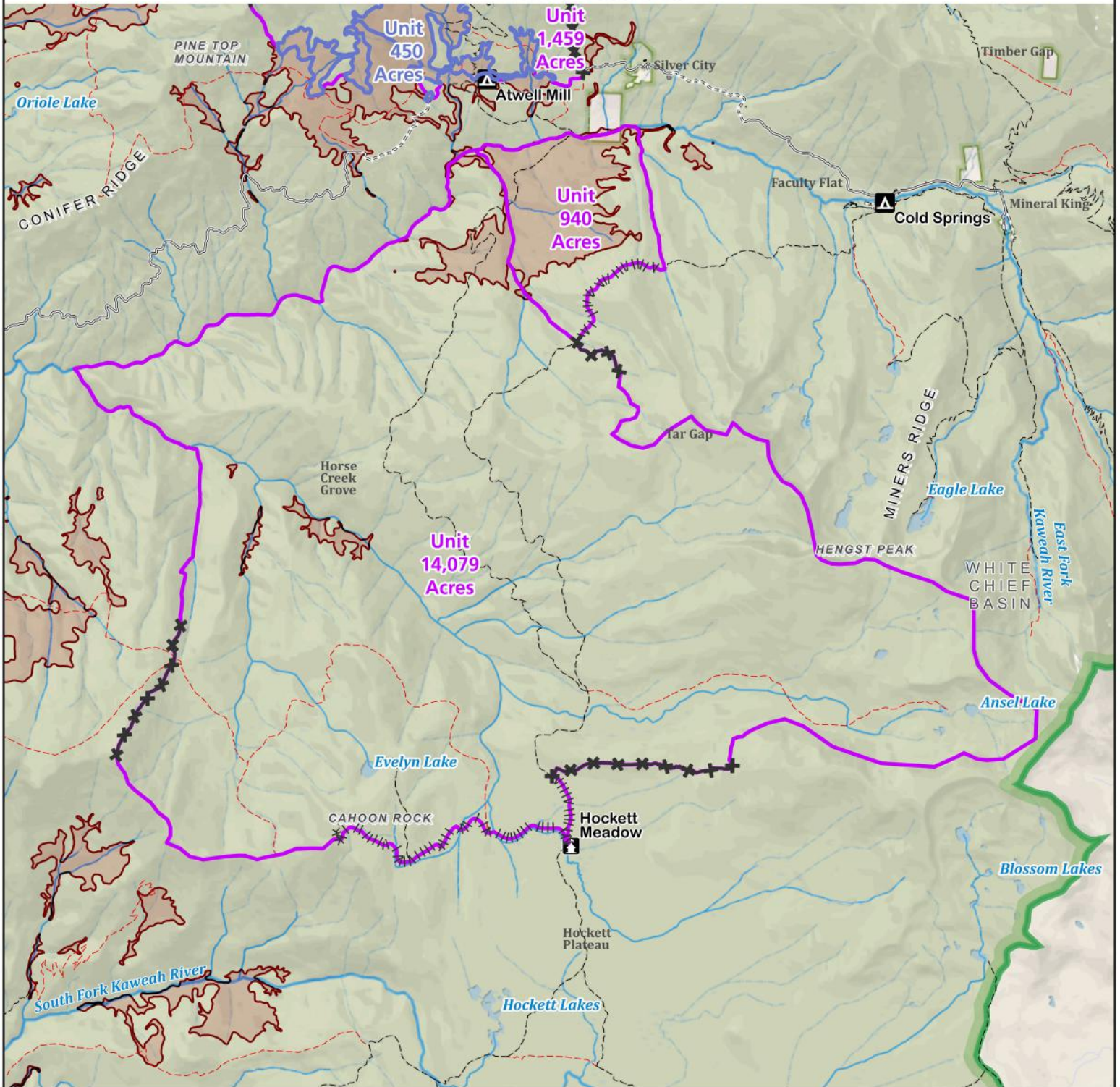


# Sequoia Grove Treatments

Sequoia and Kings Canyon National Parks  
National Park Service  
U.S. Department of the Interior



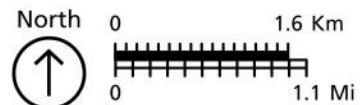
## Horse Creek Rx



- |   |                     |
|---|---------------------|
| Sequoia Groves                          | <b>ROADS</b>        |
| Sequoia Treatment Units Prescribed Fire | Public Roads Paved  |
| Restorative Thinning                    | Unpaved             |
| Proposed Fire Lines Handline            | <b>TRAILS</b>       |
| Trail Improvement                       | Maintained Trails   |
|   | Unmaintained Trails |

Produced by: NPS, SEKI GIS; 9/13/2022

This map shows giant sequoia groves selected for emergency action treatments and the boundaries for the emergency action treatments. Treatments are divided by type: prescribed fire or restorative thinning.



SCALE 1:70,000 Where 1 inch equals 1.1 miles  
NAD 1983 UTM Zone 11N

MAP FRAME EXTENT

